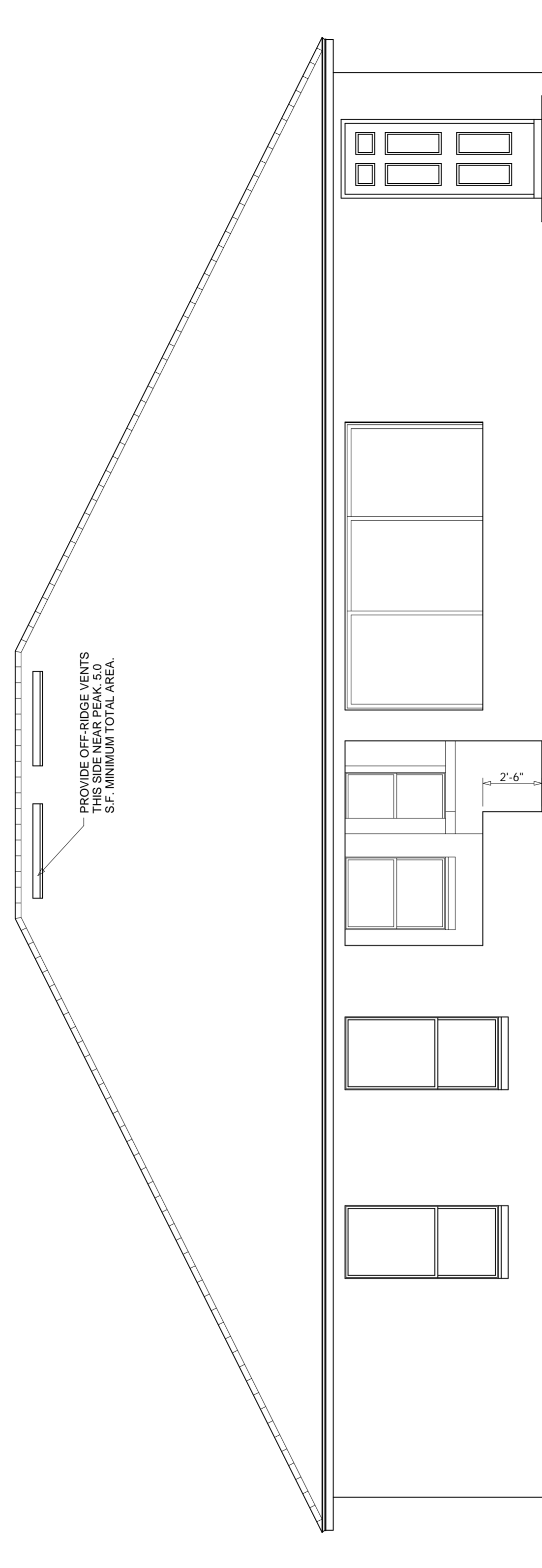


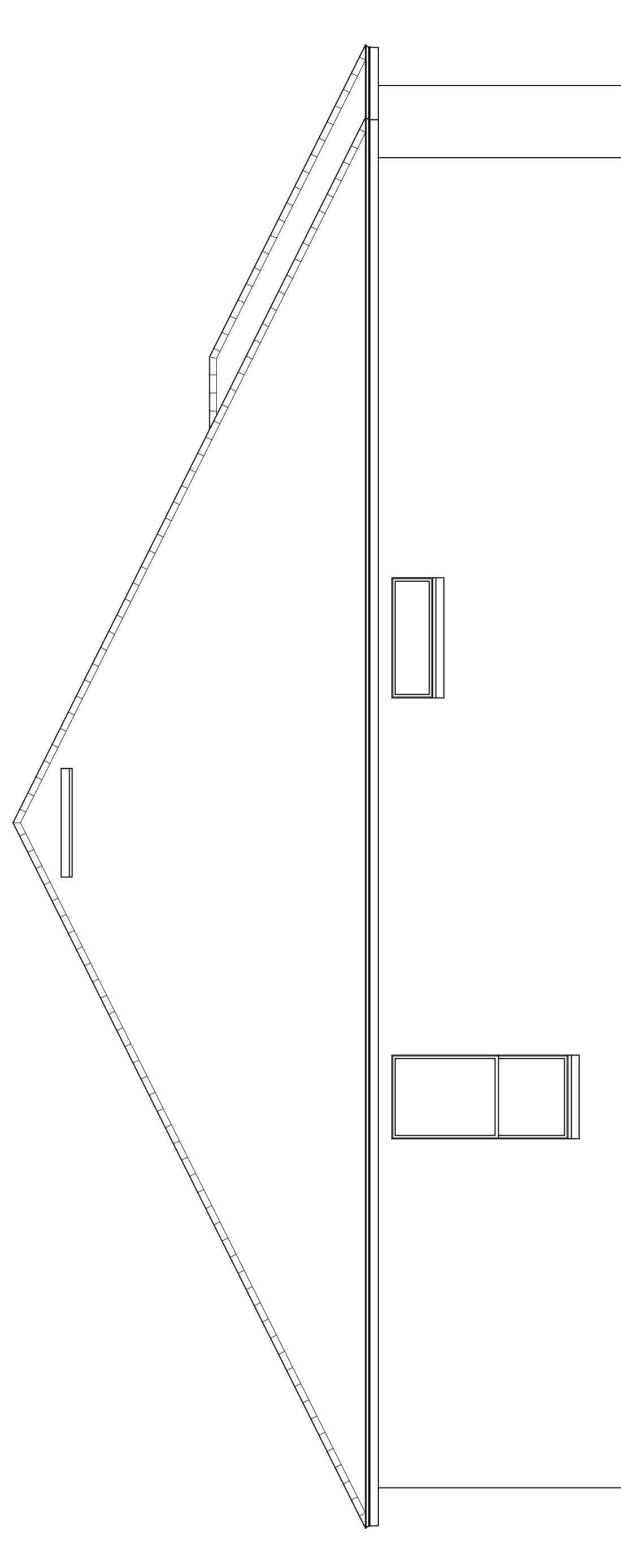
RIGHT SIDE ELEVATION

Scale 1/4" = 1'-0"



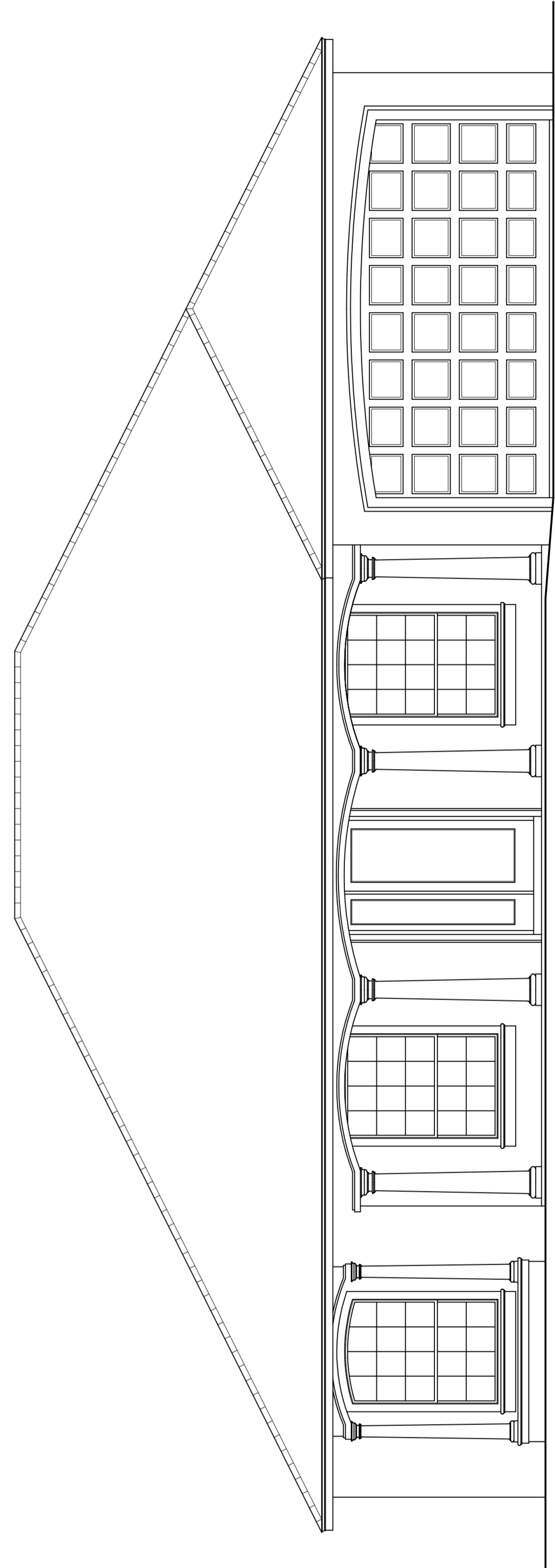
REAR ELEVATION

Scale 1/4" = 1'-0"



LEFT SIDE ELEVATION

Scale 1/4" = 1'-0"



FRONT ELEVATION

Scale 1/4" = 1'-0"

This structure has been designed to meet or exceed the 110 M.P.H. 3 second gust wind load requirements of the F.B.C. 2001, with 2002 revisions.

IVAN R. DORY
 Professional Engineer
 229 NORTH JOHN YOUNG PARKWAY
 KISSIMMEE, FLORIDA 34741-4983
 (407) 847-8765
 Fla. Reg. # 13587
 Date: _____ PE # 13587

NEW CONCRETE BLOCK RESIDENCE FOR
KENT CUSTOM HOMES, INC.
 FOR EDWARDS, OSCEOLA COUNTY, FLORIDA
 JON HOKE, 2718 TROPICAL LAKE DR., KISSIMMEE, FL. 34741
 PHONE 1-407-847-7742

DRAWN BY JON HOKE
CHECKED BY J.L.S.
DRAWING NUMBER 04-021
DATE 5/29/2004
4
OF 5 SHEETS